

Heritage Park & Surrounding Park Improvement Projects

Schematic Design



BY TRAFFIC

COMMERCE

MAIN

DEVELOP STRONG
LINKS BETWEEN
C.B.D. and PARK.

WEATHERFORD

BELKNAP

SIGNING BLOCKS - VIEW

RELATE ADJACENT LAND USES

Paddock
Park

develop river
front potential.

Access

develop river front potential.



Trinity River

Panther Island

Future

Cure the Shortcomings

1. Pedestrian Access
2. Paddock Park as Barrier
3. Isolation
4. River Access
5. Heritage Plaza in the Center of the Action

Multi-Disciplinary Team



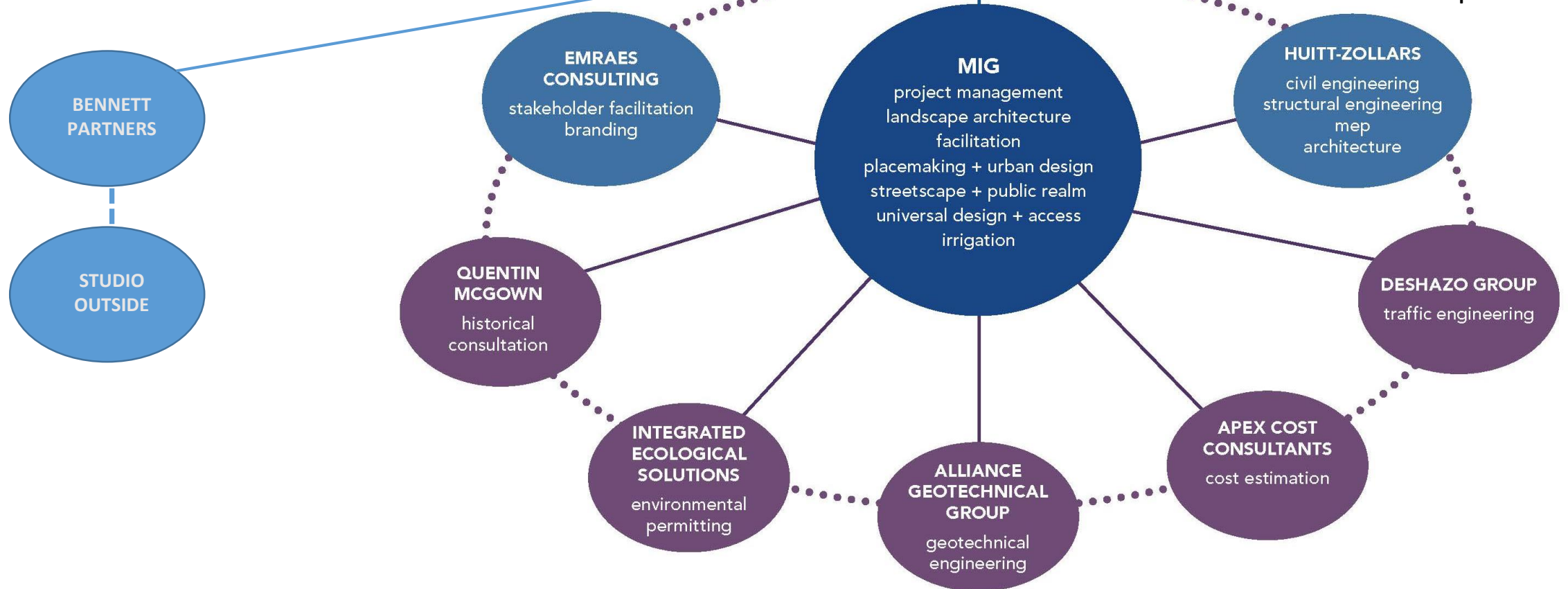
**DOWNTOWN FORT WORTH
INITIATIVES, INC.**

in partnership with the

CITY OF FORT WORTH

**Heritage Park, Heritage
Park, and Associated
Streetscapes**

**Heritage
Park Plaza**



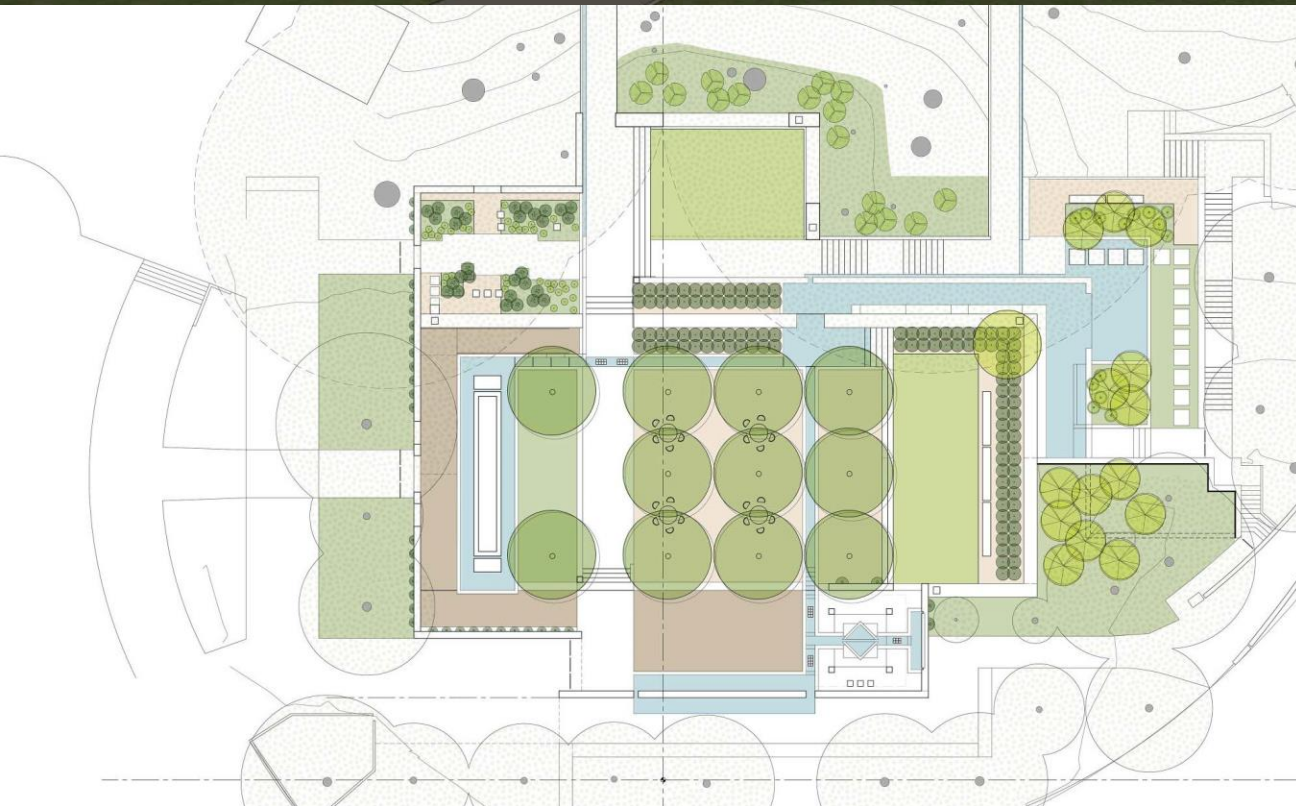
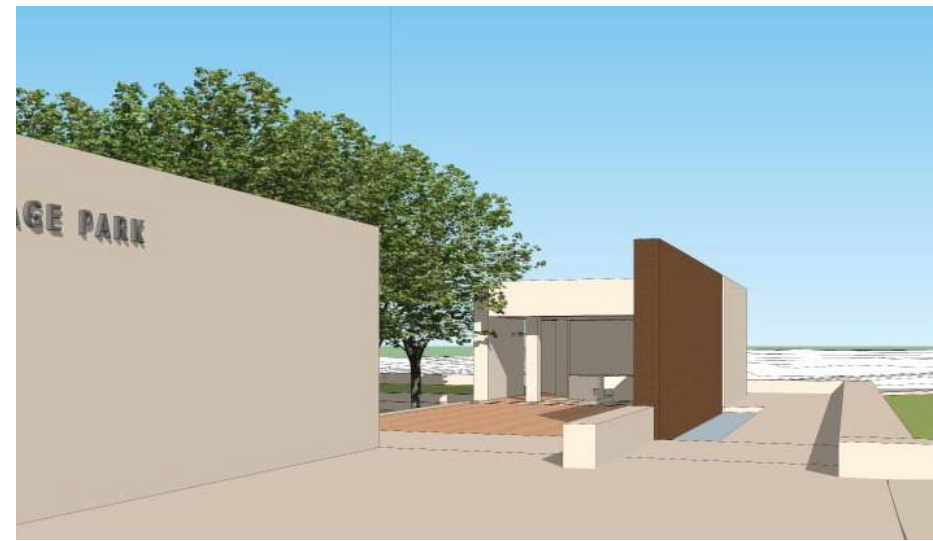
A photograph of Heritage Plaza, featuring a central water channel flanked by concrete walls. Large trees with green foliage are scattered throughout the plaza. In the background, a wall with an inscription is visible, along with a modern building and a chain-link fence.

Heritage Plaza

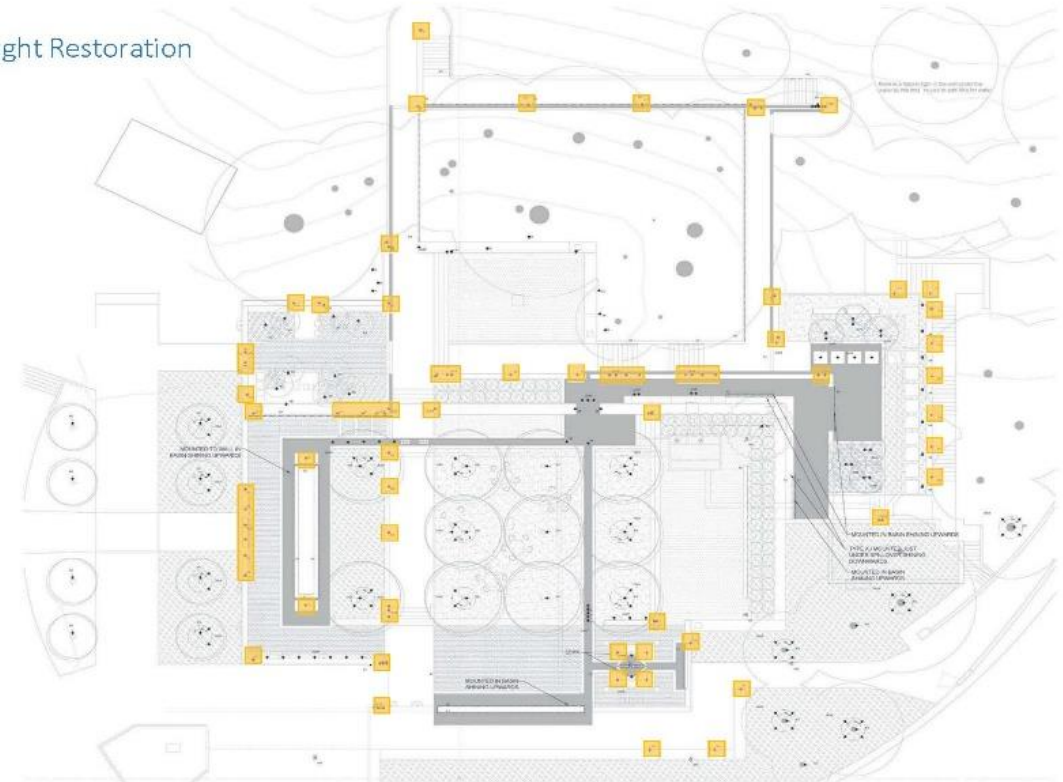
*Embrace the spirit and the freedom
which inspired those who
to shape our heritage*

Downtown TIF and Philanthropy

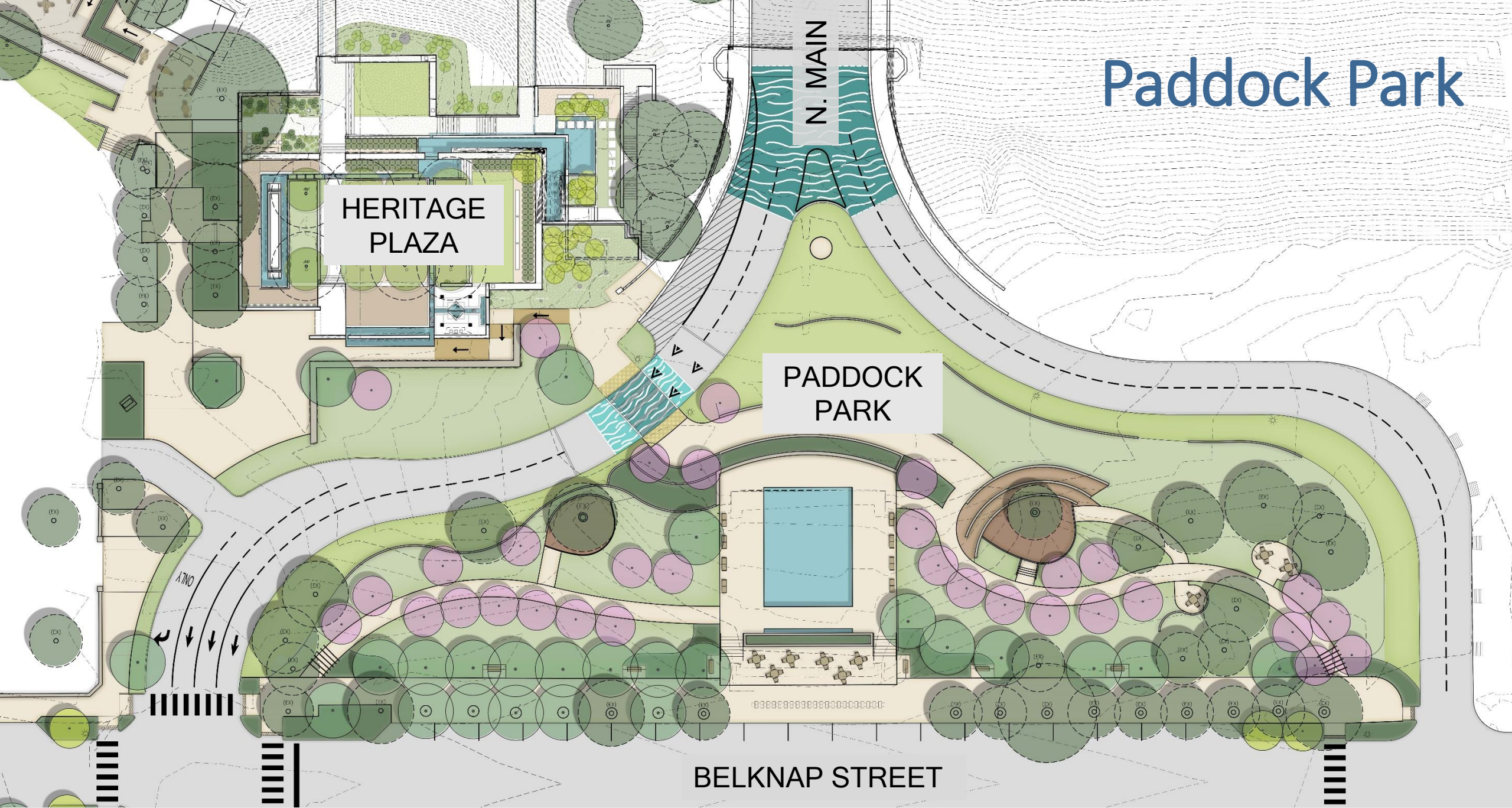




Halprin Light Restoration



Paddock Park



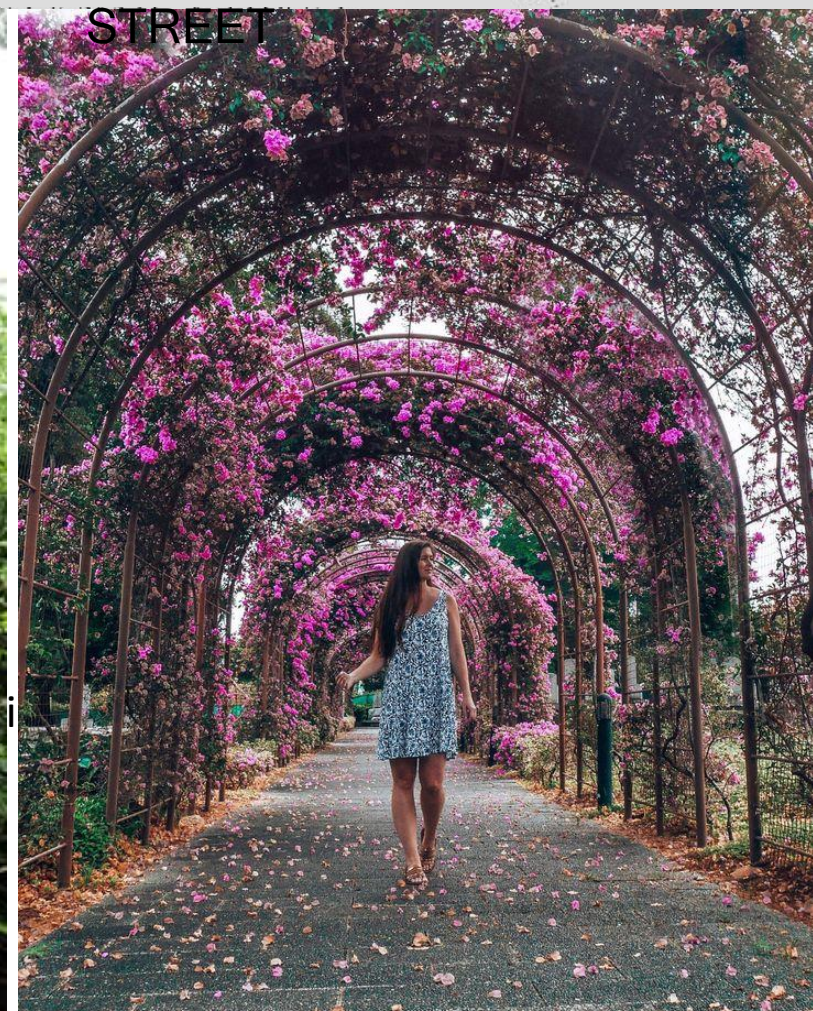
HERITAGE
PLAZA

PADDOCK
PARK

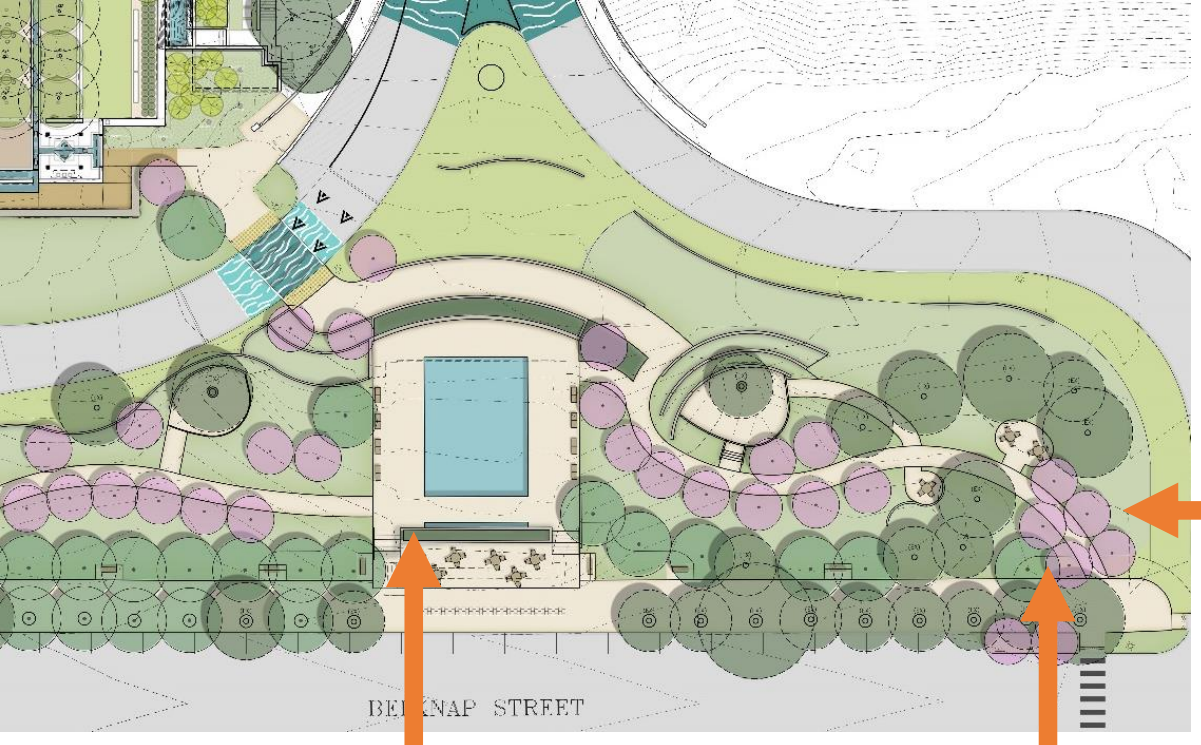
N. MAIN

BELKNAP STREET

Paddock Park



Paddock Park - gateways



Perimeter planting



Gateway and planters



Gateway and planters



Paddock Park - Lighting



PERMITTED
PARKING
ONLY
REQUIRED
←

PERMITTED
PARKING
ONLY
←

Paddock Park





UNREGISTERED
VEHICLES
ONE
DAY ONLY

DO NOT
ENTER

HERITAGE PARK

HERITAGE PLAZA

Forecourt and Promenade





Foyer and Balcony




Canopy Walk



River Stairs





*“You can’t call it **Heritage Park** without recognizing the heritage of everyone that’s been there.”*



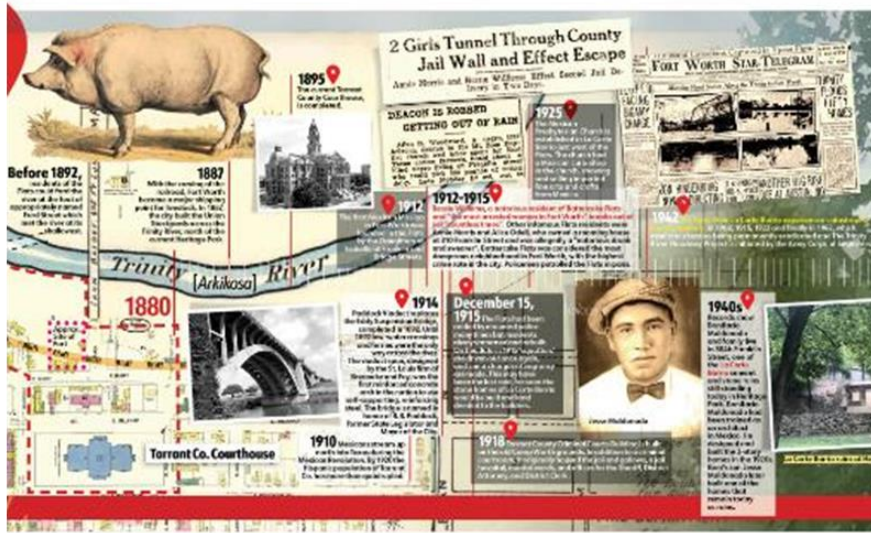
Heritage Park Paddock Park

Public Art Master Plan



FORT WORTH PUBLIC ART

Legge Lewis Legge LLC



Opportunities

for Public Art

1

Paddock Park

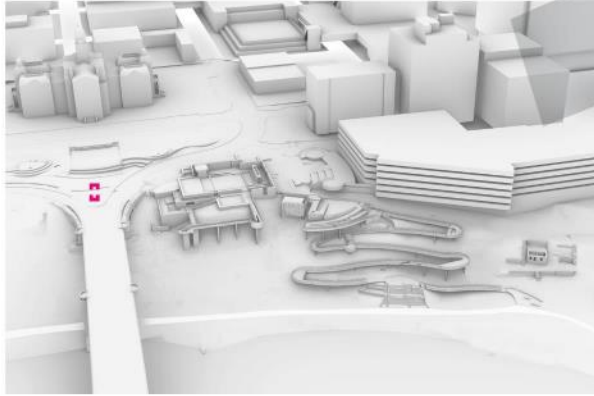
2
The Flats &
La Corte Barrio

3

Tarrant County Parking Garage

4
The River's Edge

5
River Stairs & Canopy Walk



Paddock Park

► Iconic Gateway Artwork

► Advised for Native American Artist(s)

► Opportunity for an iconic work of art in alignment with the 2017 Fort Worth Public Art Master Plan Update recommendation for iconic works (see Appendix, pages 104-105) and the 2019 Iconic Public Works Strategic Plan (see Appendix, pages 106-108).

► The suggested location of this work is in the triangular area in front of Paddock Park, visible to vehicles approaching from the north as well as to pedestrians.

► It is advised that this opportunity be provided to an artist or artist group of Native American heritage and is open to local, regional, or national Native American artists.

► This opportunity is among the works to be commissioned first.

► Identify partner(s) and a 'core team' to initiate iconic artwork.¹

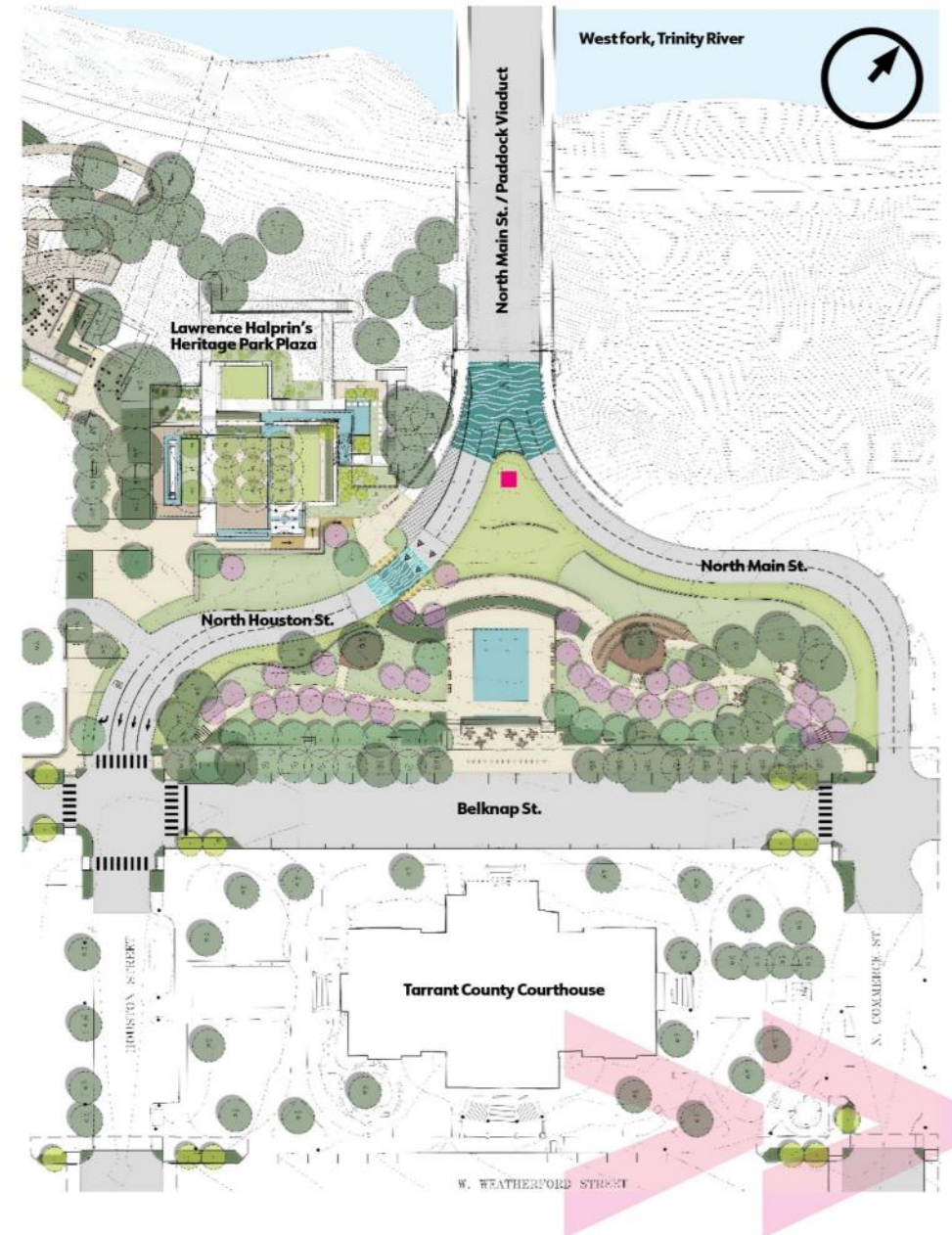
► Budget minimum: \$750,000.00

► See page 88 for precedents for iconic artwork.

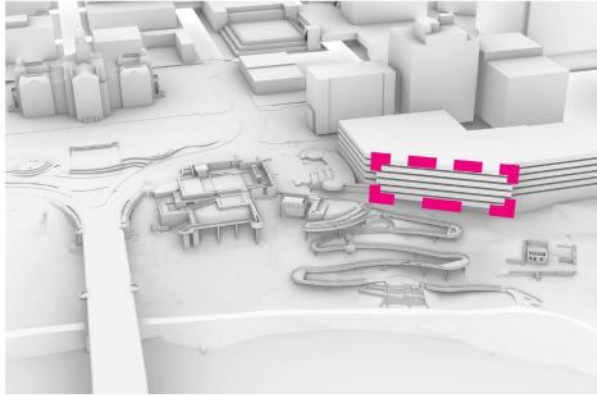


¹ 2017 Fort Worth Public Art Master Plan Update, 2019 Iconic Public Works Strategic Plan

Model: Legge Lewis Legge from MIG draft park plan 2022



Map: MIG draft park plan 2022



LONG TERM TEMPORARY BILLBOARD VINYLs: Proposal for vinyl signage/billboard treatment of Tarrant County Parking Garage to raise awareness of the park. Proposed as a long-term (1-5 years) temporary project to be installed prior to and during construction of the park. Design by Legge Lewis Legge, based on the Timeline project in this document. Going forward, long-term vinyl designs could change in a curated, rotating program of local artists.

Tarrant County Parking Garage

► Long term temporary painted or vinyl murals (see proposal for vinyl murals at left) or light-based projections* on lower wall along Franklin St., and/or LED screen type installations* on upper portions of north-facing walls.

*Per preliminary feasibility consultation by AURORA in April 2022.

► An opportunity to partner¹ with Tarrant County for billboard-like vinyl designs or new media artwork in the form of light-based LED screens to be installed before, during and/or after park completion. This opportunity has the capacity to eventually involve different artists in a revolving program of long-term temporary curated artworks, either vinyl designs or light-based works.

► Open to all artists.

► Budget minimum: TBD *per full feasibility study by AURORA at a future date.

► See page 92 for precedents of light-based artwork.



LIGHT BASED, Conceptual rendering, looking southwest from Paddock Viaduct. Light-based projections on garage wall (LED screens on upper floors; projections on ground floors).

Model: Legge Lewis Legge model from MIG draft park plan 2022. Renderings: Legge Lewis Legge

¹ Appendix pg 104-106: 2017 Fort Worth Public Art Master Plan Update



Immediate Next Steps

Schematic Design

- Schematic Design/Budget Presentation at City Council 10/4
- Community Outreach

Funding

- Advance conversations with NCTCOG for bike improvements/canopy walk
- Launch fundraising efforts - \$20M

Design Development (30%)

- Advance TxDOT reviews
- Advance conversations with the NCTCOG/Texas Historical Commission/Army Corps
- Initiate Environmental Review



Heritage Park & Surrounding Park Improvement Projects

Schematic Design

